



The Suncor Burrard Products Terminal is situated on 430 acres of land of which 175 acres are used for Terminal operations.

- The Upper Terminal, located in Port Moody, contains the fuel processing units, main tank farm and the fuel blending facilities.
- The Middle Terminal is located on the south side of the Barnet Highway in Burnaby. It contains the secondary tank farm and truck facilities.
- The Lower Terminal is located in Burnaby, Port Moody and along the Burrard Inlet. It contains the marine and rail facilities.

Gasoline, diesel, jet fuel, ethanol, and bio-diesel arrive at the Terminal via pipeline, marine tankers, trucks and rail.

The Terminal is beginning construction on a project to increase the rail offloading capability of diesel at its facility.

To accommodate this increase in diesel receipts from rail, modifications to diesel storage, piping, and marine loading facilities will be required. The project will focus on minimizing environmental impact and reduced noise considerations.

As part of the project work, certain buildings are being demolished and the surplus material needs to be moved to different locations on the site. As well, new material will need to be trucked in for construction purposes.

Truck Routes

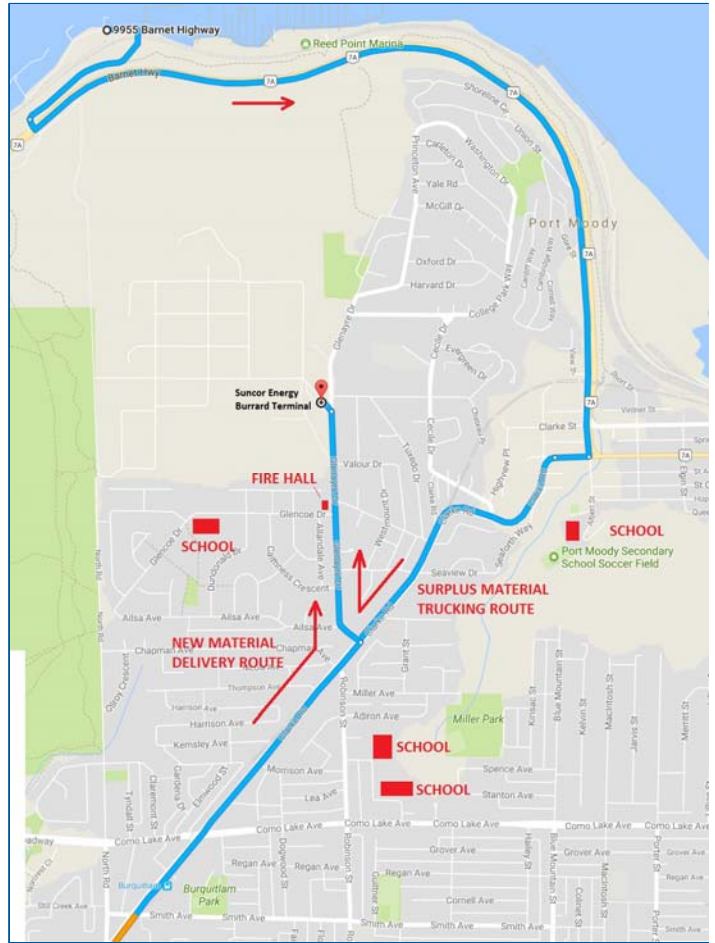
There will be two routes that the haul/dump trucks will be travelling:

- Surplus Material Trucking Route – Trucks will travel from the Lower Terminal and will travel east along the Barnet Highway (7A). At the corner of Barnet Highway/Clarke Street, the trucks will turn west onto Clarke Road, and then turn north at Glenayre Drive to the Upper Terminal.
- New Material Trucking Route – Trucks will travel from suppliers along Clarke Road and then will turn north onto Glenayre Drive to the Upper Terminal.



Here is the timing of the truck traffic for 2017-2018:

Truck Route	Date	Truck Frequency	Timing
Surplus Material Trucking Route	August 1 – September 15, 2017	10 trucks per day	7 am – 5:30 pm 6 days a week (Monday through Saturday)
New Material Trucking Route	August 15, 2017 – February 15, 2018	5 - 10 trucks per day	7 am – 5:30 pm 5 days a week (Monday through Friday)



Concerns and Mitigation

The Project Team has been working closely with the City of Port Moody to ensure the safe transportation of these large trucks in our neighbourhood. We understand that the truck traffic might be a concern to the local community and we have undertaken the following:

Concern	Who is impacted?	Mitigation
School traffic (vehicular and pedestrian)	Port Moody Secondary School Glenayre Elementary School Banting Middle School Miller Park Community School	An escort truck (complete with flashing lights) will guide the trucks to the Upper Terminal through the intersection of Barnet Highway and Clarke Road. Direct communications with the schools Will work around schools' busy times whenever possible
Emergency Response in community	Port Moody Fire Hall	Direct communications with the Fire Hall; plan in place in the event of emergency response requirements
Material falling off trucks on routes	Local residents	All dump trucks must have a secure tarp on their haul material – this will be monitored closely

At Suncor, we value the relationship we have with our neighbors and will work to minimize the impact of this activity. We will ensure that the transportation of this material is done in a safe and efficient manner.

We apologize for any inconvenience this may cause and thank you for your patience.

Contact information

Suncor Energy Burrard Products Terminal, P.O. Box 70, 1155 Glenayre Drive, Port Moody, BC V3H 3E1
Should you have any questions or concerns regarding this work, please contact Bill van Beek, Terminal Manager, at (604) 933-3015.

