



05 July 2018

Attention: Mr. Greg Paliouras (gpaliou@sears.ca)
Company: Sears Canada Inc.
Address: Department 702 C E Real Estate, 290 Yonge Street
Toronto, Ontario M5B 2C3

**Amendment Letter
2018 Second Quarter Groundwater Monitoring and Sampling Report
Hounsfeld Heights – Briar Hill Community
Calgary, Alberta**

File CG2430.1 E30

At the request of Mr. Greg Paliouras of Sears Canada Inc., in response to a request made by Mr. Craig Knaus of Alberta Environment and Parks on 26 June 2018, Clifton is pleased to provide this amendment letter to the report titled *2018 Second Quarter Groundwater Monitoring and Sampling – Hounsfeld Heights – Briar Hill Community, Calgary, Alberta, 09 May 2018* (the Report).

This amendment reflects the addition of three figures, Figure 10, 11 and 12, to the report. The Figures present the distribution of benzene, 1,2 – dichloroethane and naphthalene, by stratigraphic unit, as plume maps.

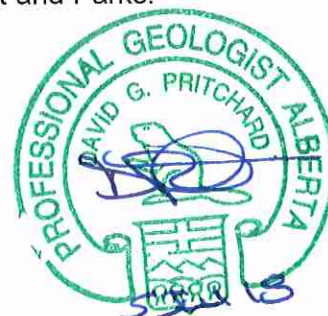
We trust this amendment meets the request of Alberta Environment and Parks.

Yours truly,

Clifton Associates Ltd.

A handwritten signature in blue ink, appearing to read 'Stephen d'Abadie'.

Stephen d'Abadie, PBIol
Project Manager



David G. Pritchard, PGeol
Director, Environmental Services

Association of Professional Engineers
Geologists and Geophysicists of Alberta
Permit to Practice P4823

Appendices:

Figures

- Figure 10 Distribution of Benzene in Groundwater as Plume Map, April 2018
- Figure 11 Distribution of 1,2 - Dichloroethane in Groundwater as Plume Map, April 2018
- Figure 12 Distribution of Napthalene in Groundwater as Plume Map, April 2018

Appendices

Clifton Associates

Appendices

Clifton Associates

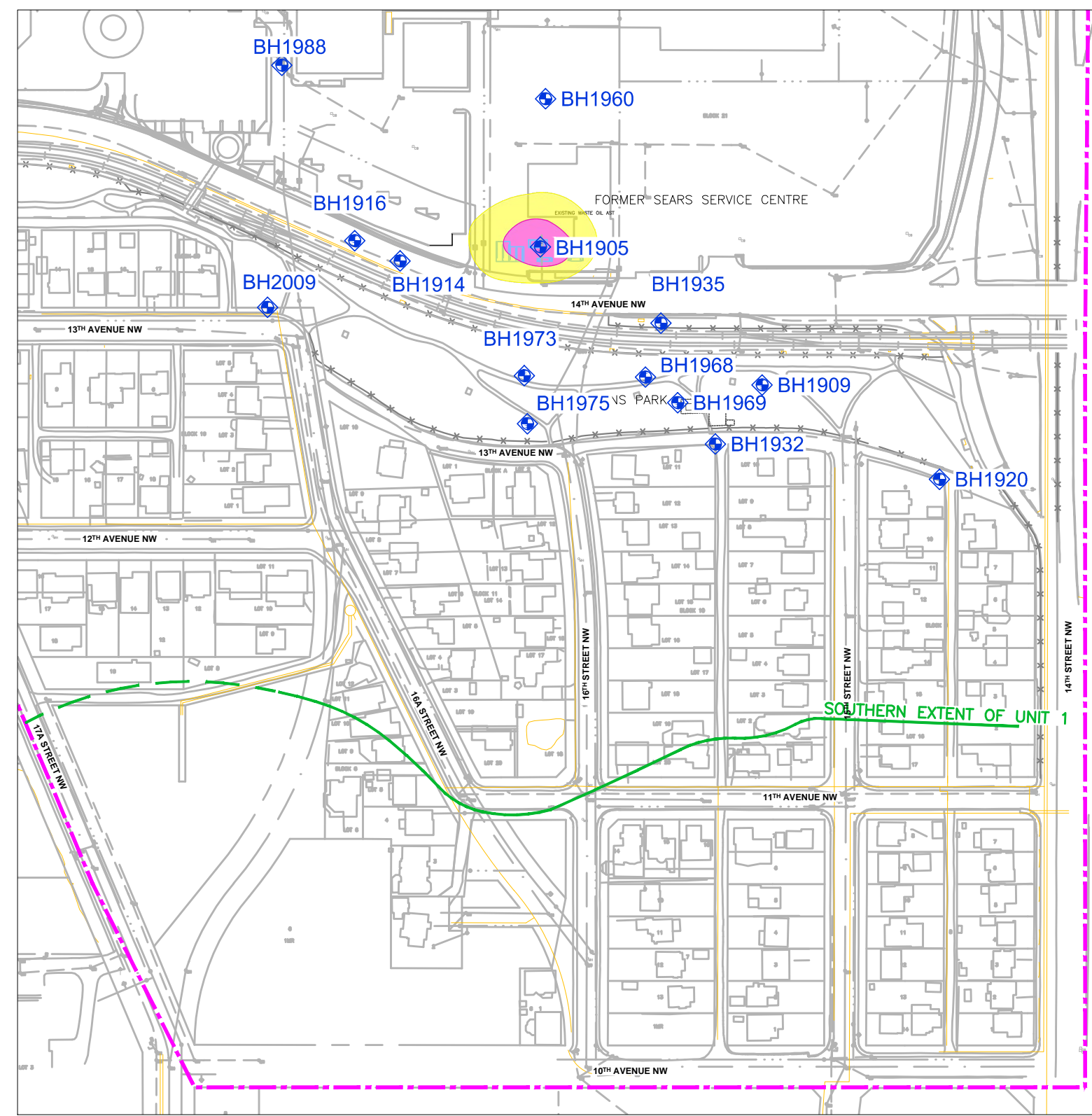


Calgary Office

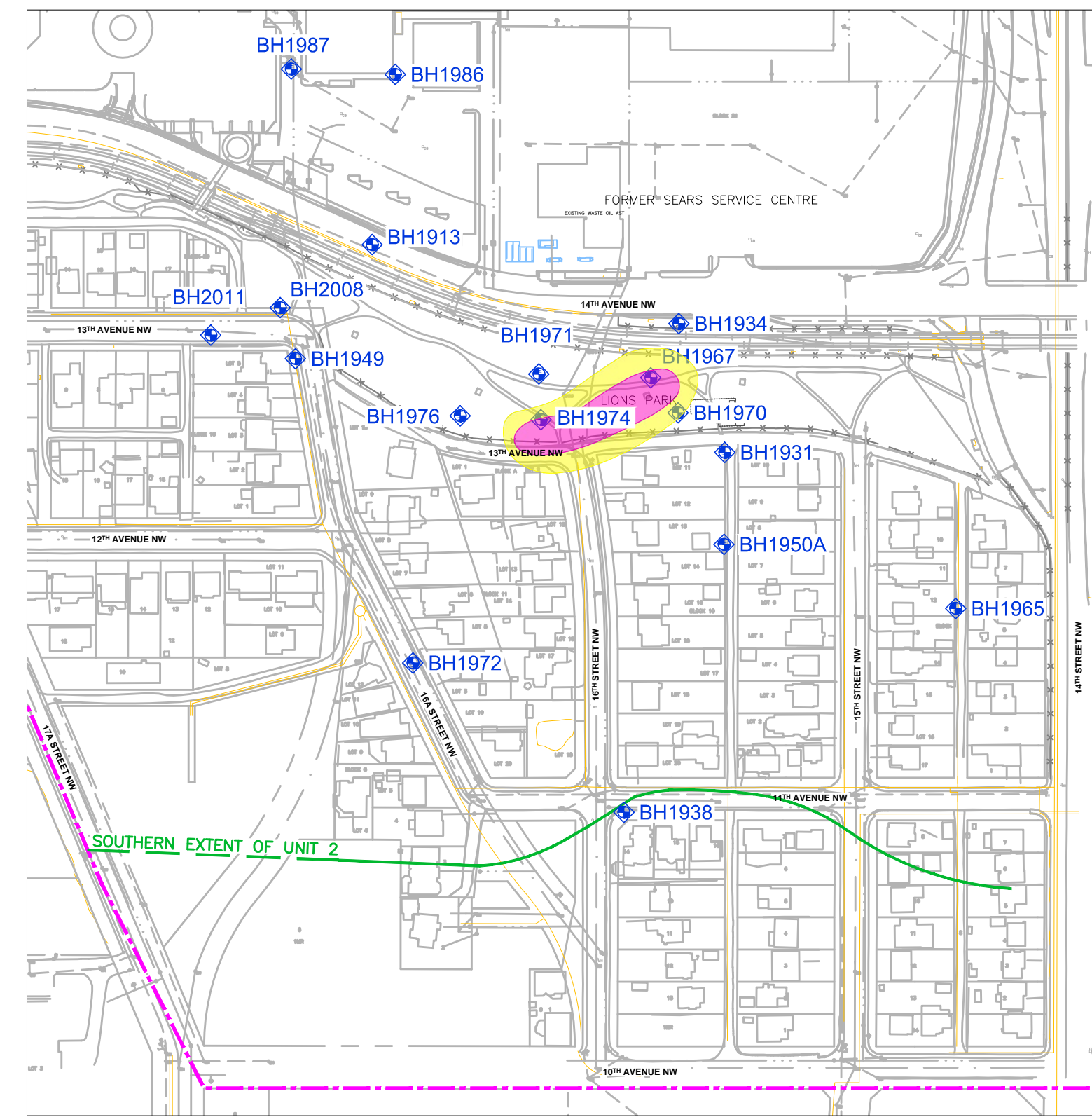
2222 30th Avenue NE
Calgary, Alberta T2E 7K9

T (403) 263 2556
F (403) 234 9033

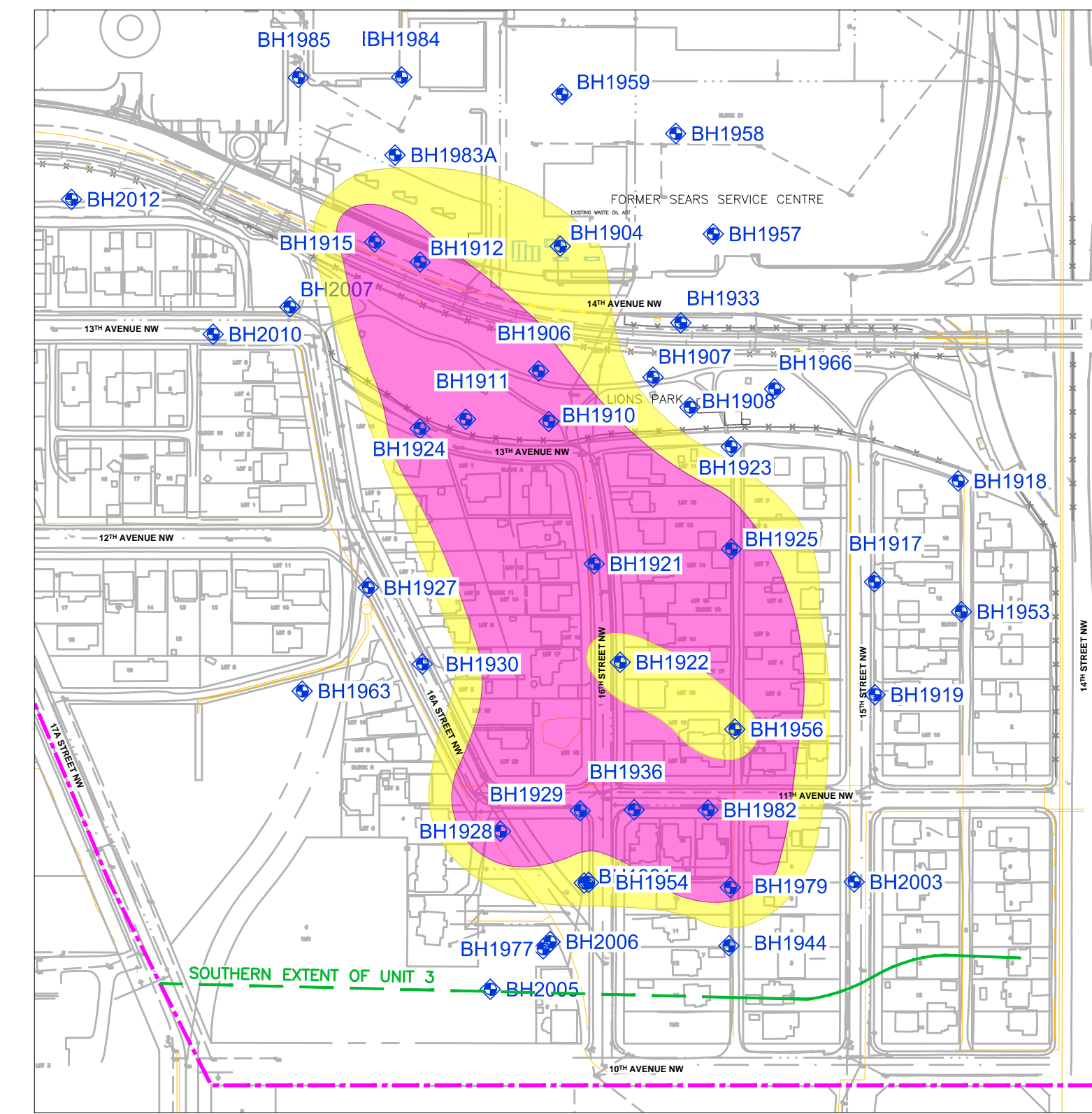
calgary@clifton.ca
www.clifton.ca



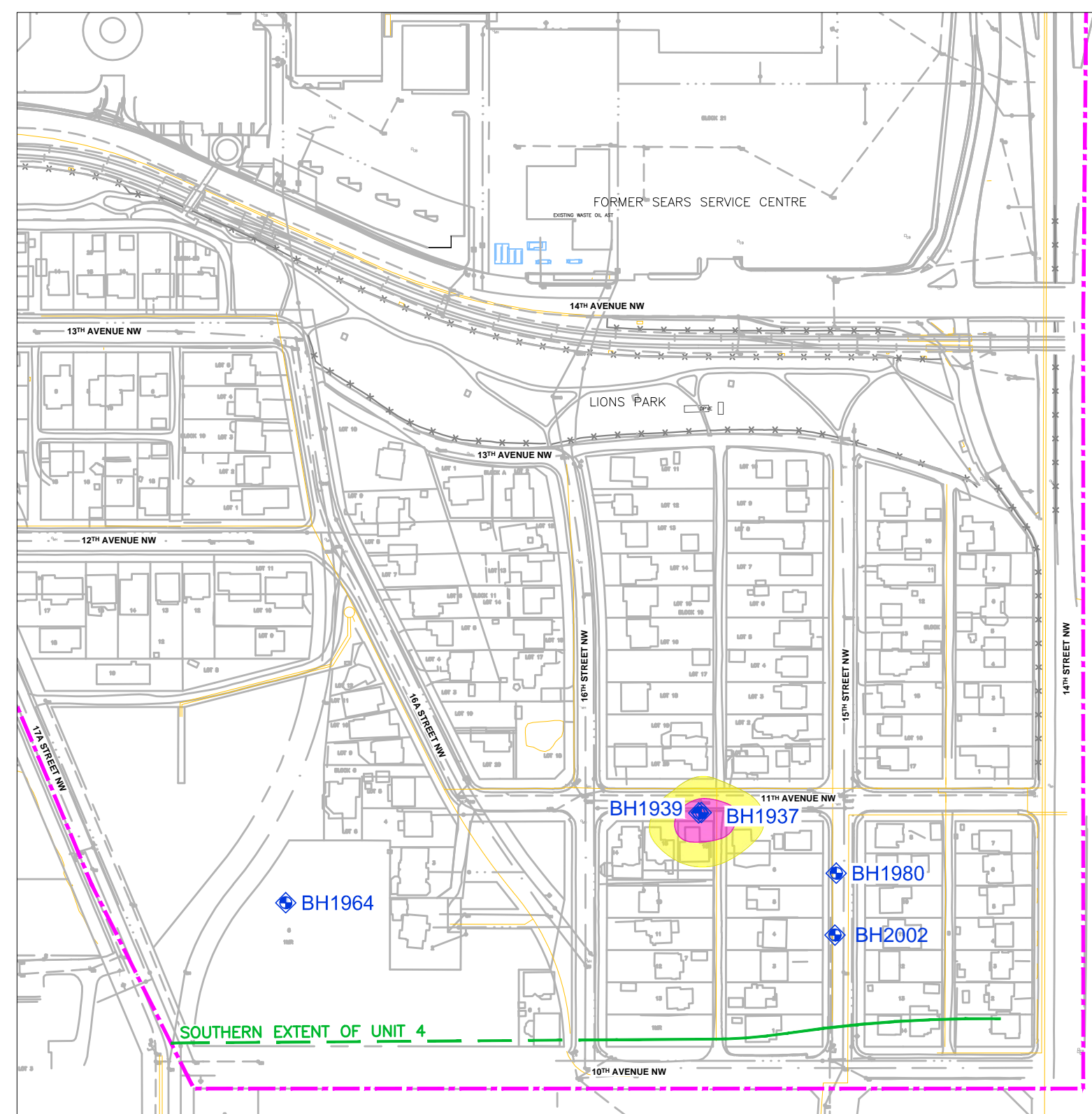
UNIT 1 - UPPER SILTY SAND



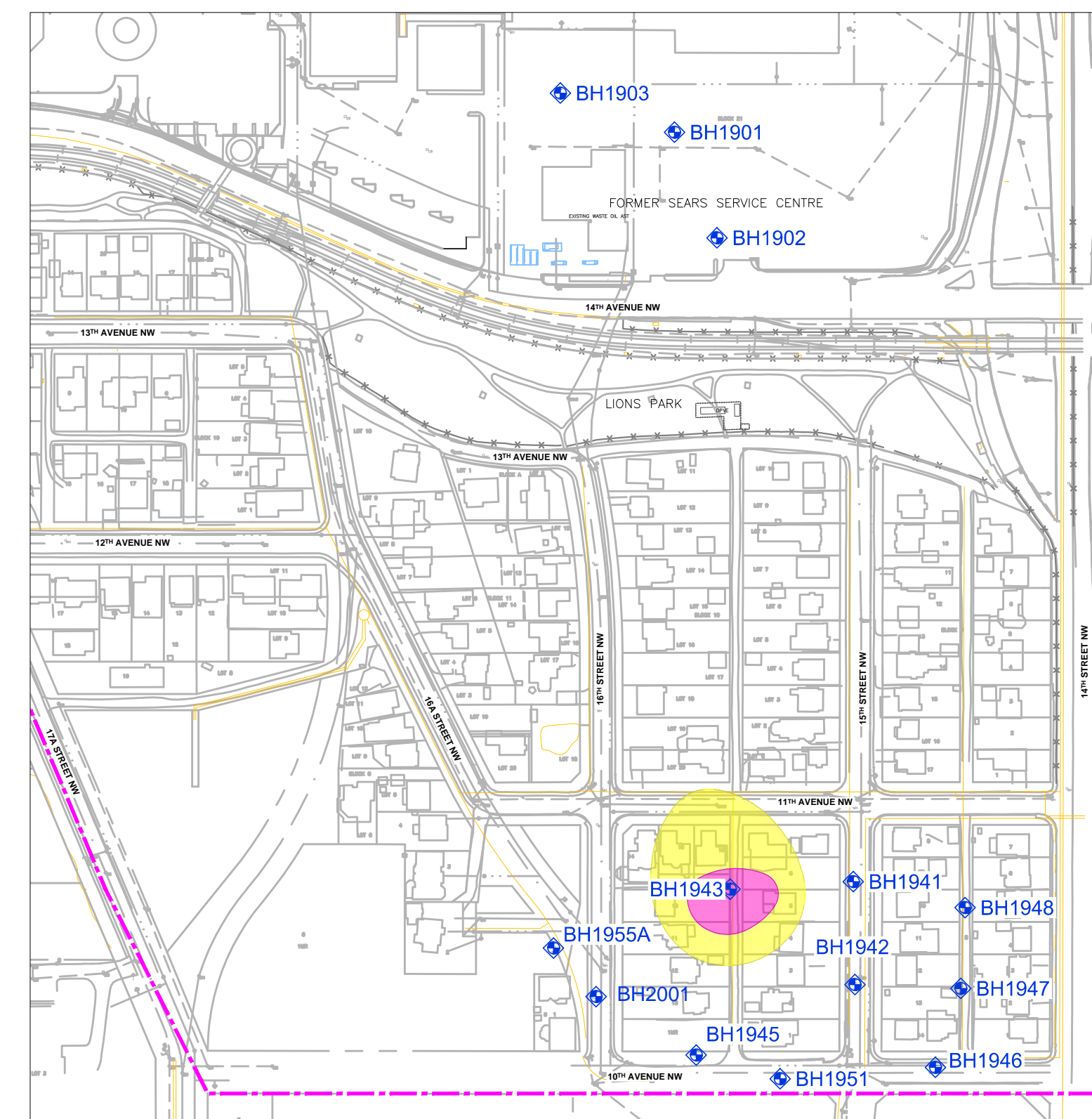
UNIT 2 - UPPER CLAYEY SILT



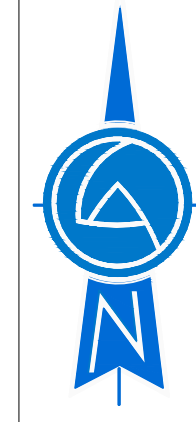
UNIT 3 - MIDDLE SANDY SILT



UNIT 4 - LOWER CLAYEY SILT



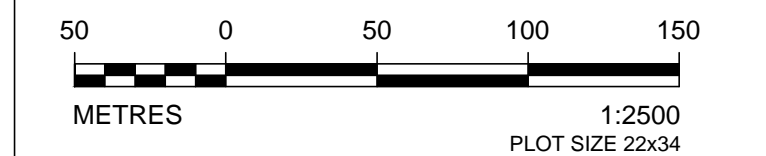
UNIT 5 - LOWER SILTY SAND AND GRAVEL



LEGEND

- SITE BOUNDARY
- EXTRACTION WELL ■
- LRT TRACKS
- FENCE LINE
- LEGAL LINE
- FORMER FACILITY/FEATURE
- BUILDING
- EXISTING GROUNDWATER MONITORING WELL ◆
- BH1963 ◆
- CONCENTRATION EXCEEDS ALBERTA TIER 1 GUIDELINE VALUE - 0.005 mg/L
- DETECTABLE CONCENTRATION BUT BELOW ALBERTA TIER 1 GUIDELINE VALUE - 0.005 mg/L
- UNIT CONTACT

NOTES:
 1 DRAWING COMPILED FROM PLANIMETRIC FILES SUPPLIED BY THE CITY OF CALGARY (INCLUDING UG UTILITIES) & FROM SITE ASSESSMENT INFORMATION. ADDITIONAL REFERENCES FROM SEACOR ENVIRONMENTAL ENGINEERING INC., DRAWINGS 149-5A11.DWG, 149-5A6.DWG.

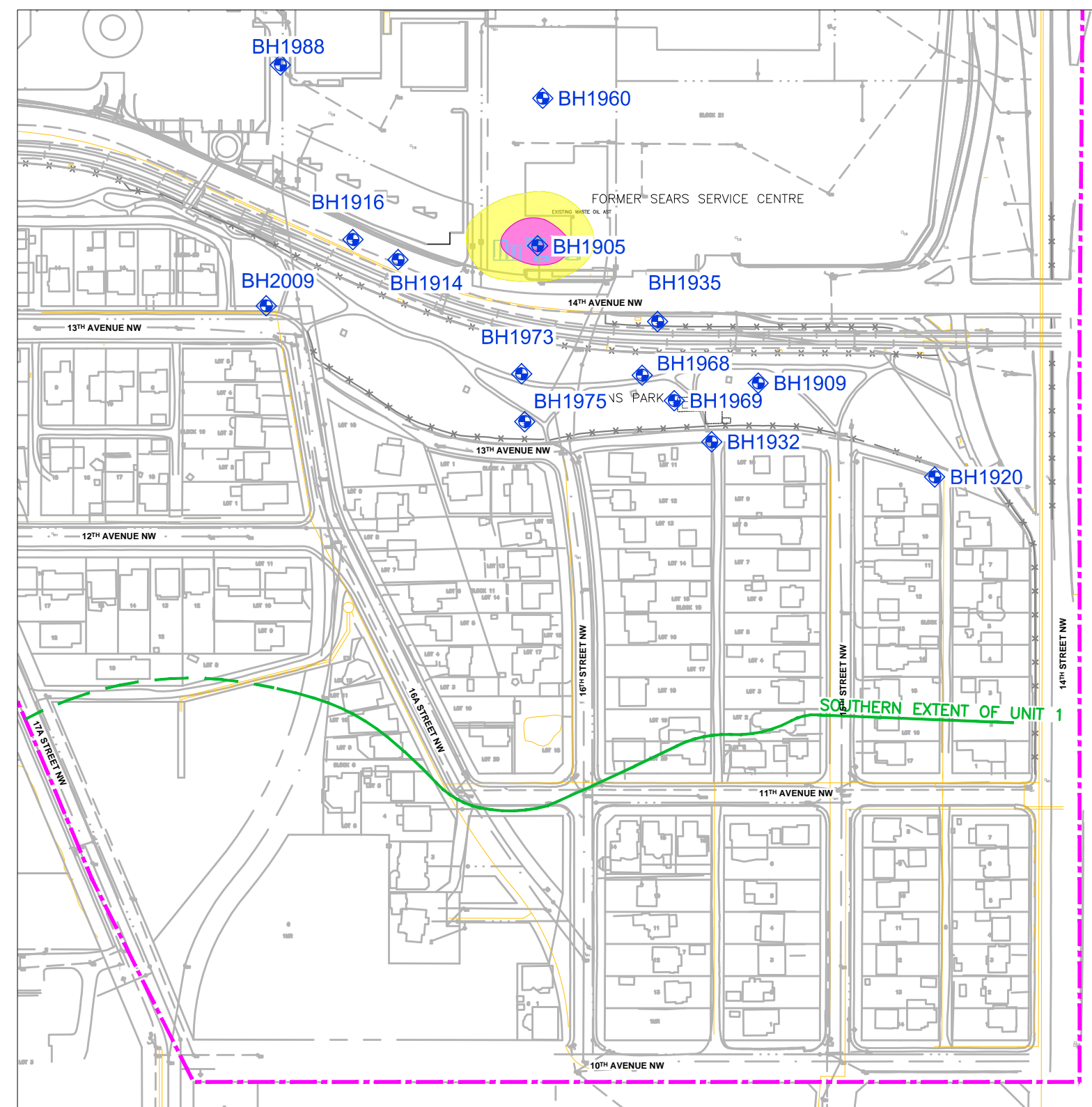


SEARS
 PROJECT AMENDMENT LETTER
 Q1 2018 MONITORING AND SAMPLING PROGRAM
 HOUNSFIELD HEIGHTS - BRIAR HILL COMMUNITY
 CALGARY, ALBERTA

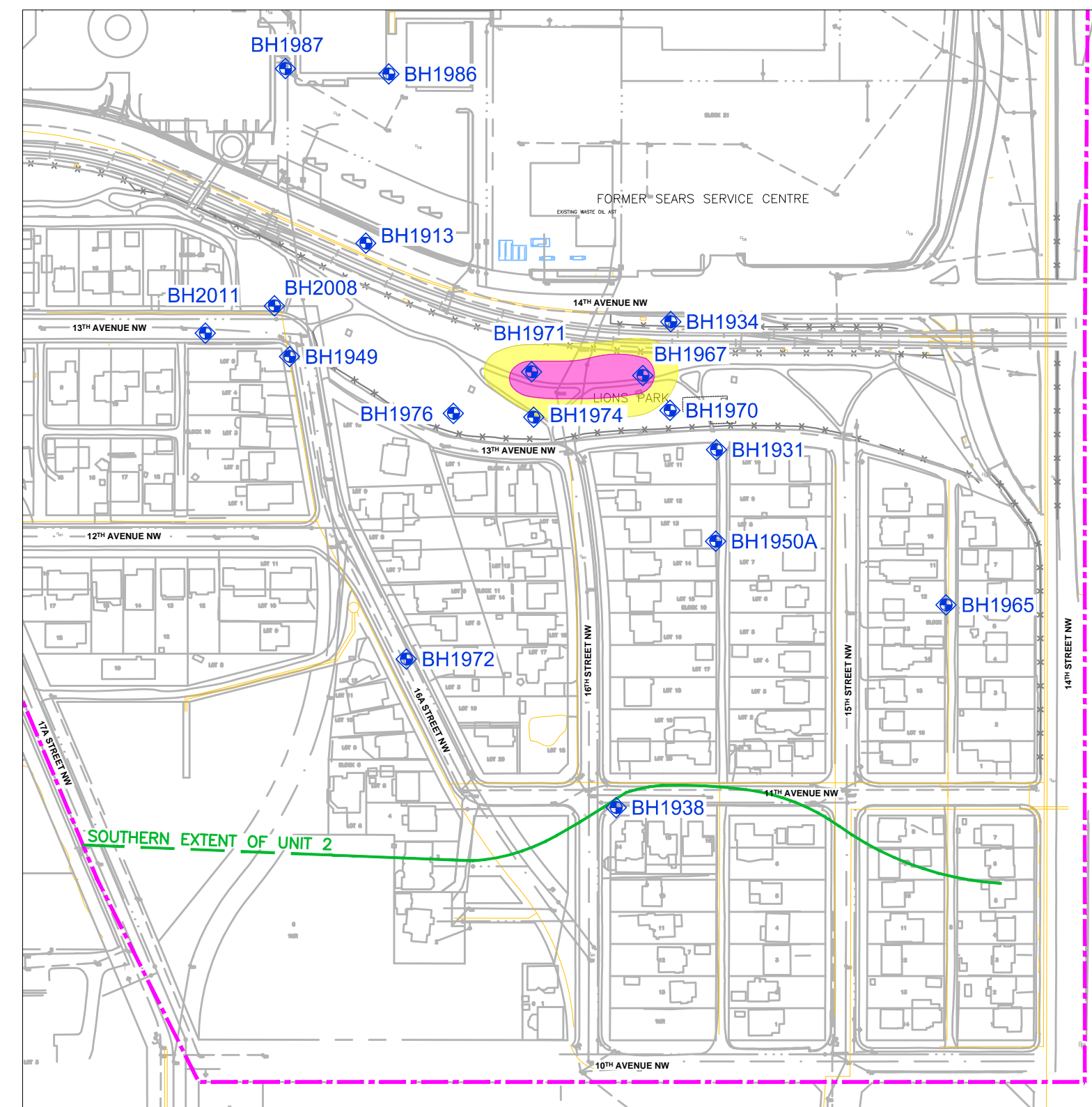
TITLE
 DISTRIBUTION OF 1,2 - DICHLOROETHANE
 IN GROUNDWATER, AS A PLUME MAP, APRIL 2018

DESIGNED	SCALE	DATE
RD	1:2500	2018-07-05
CHECKED	PROJECT NO.	FIG.
TK	CG2430.1 E30	11
	FILE NO.	
	CG2430.1-E28-09	

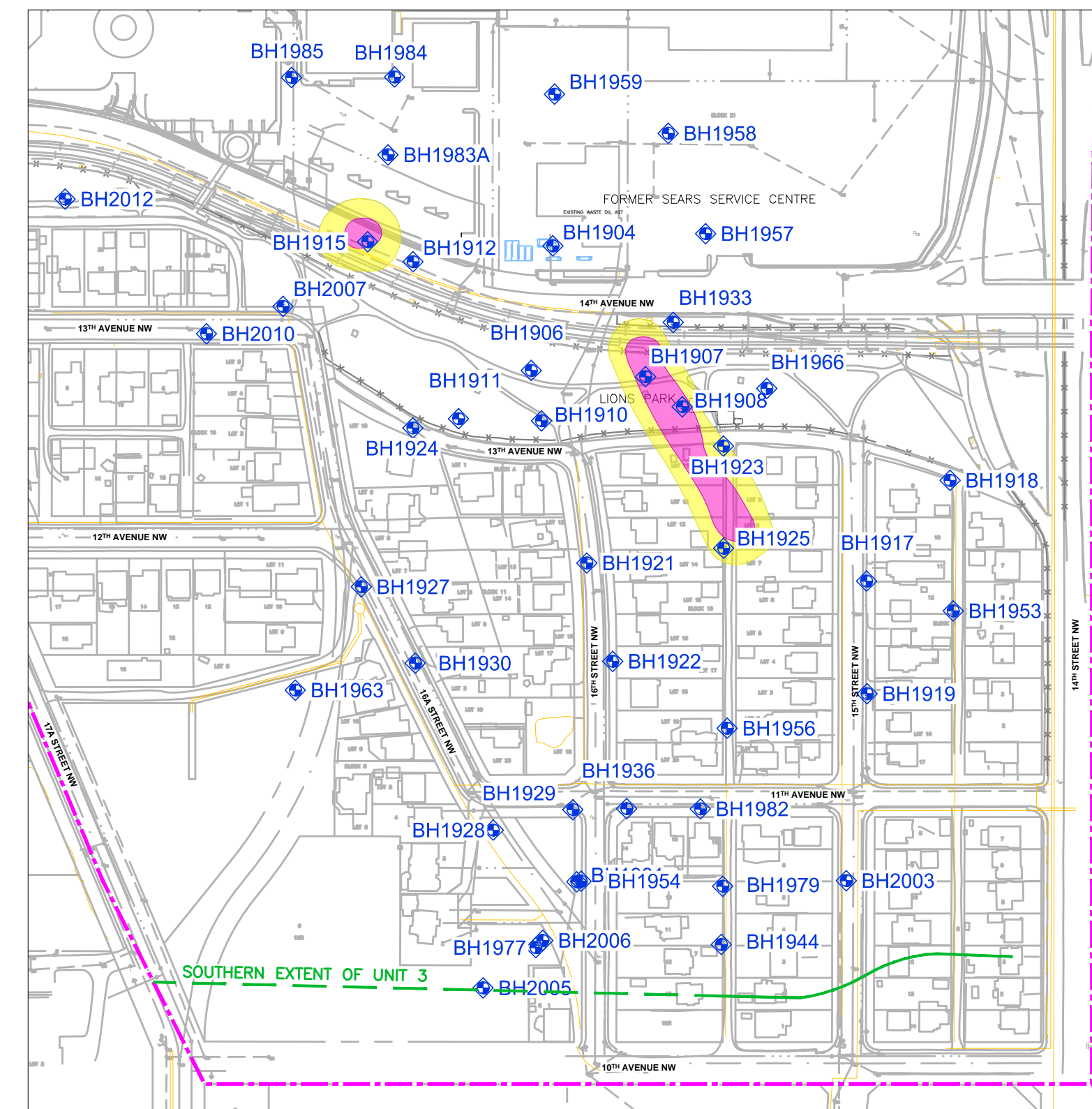
W:\2018\1804\CG2430.1-E28-09\CG2430.1-E28-09.dwg, 07/05/2018, 10:31:18 AM



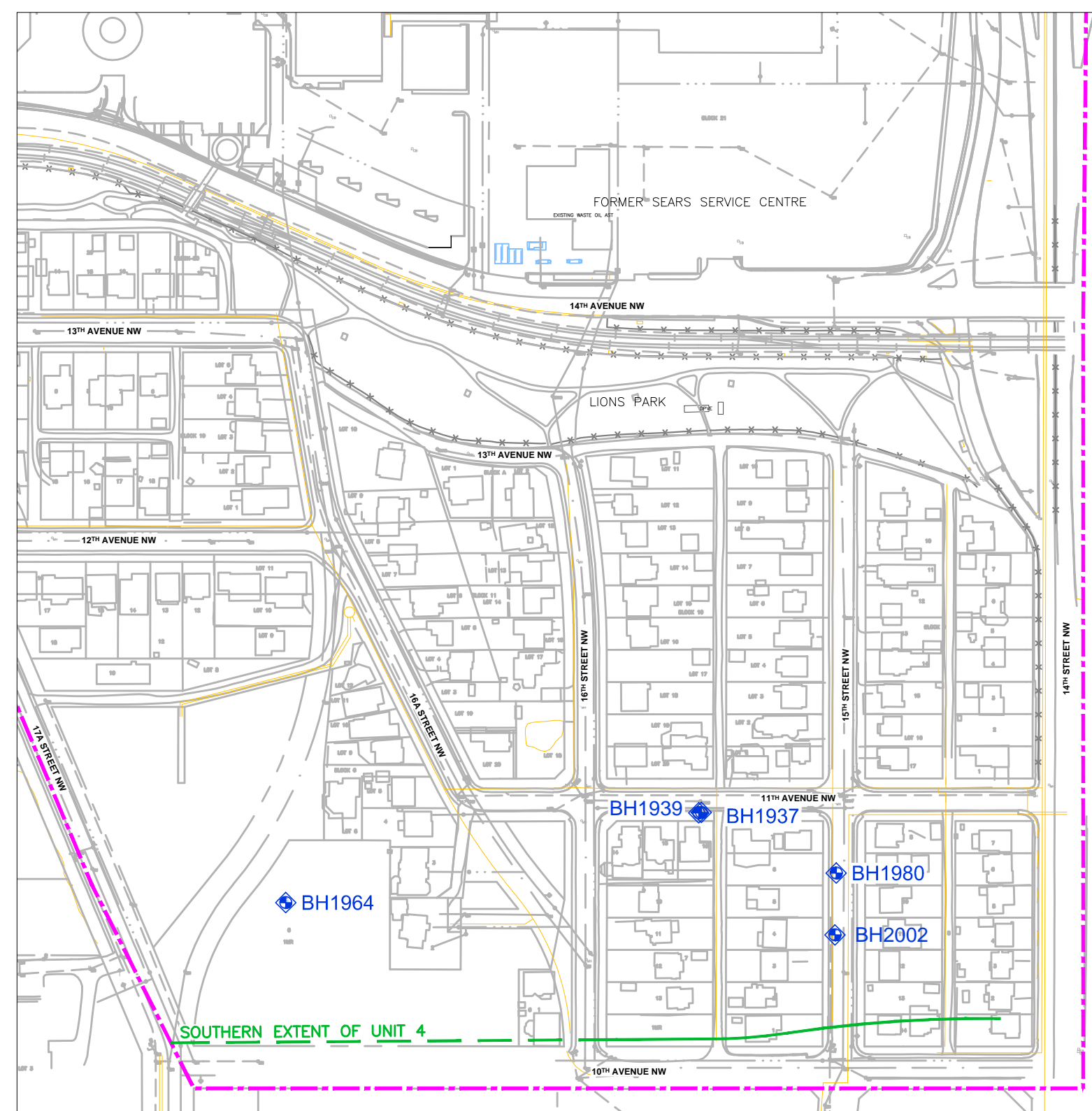
UNIT 1 - UPPER SILTY SAND



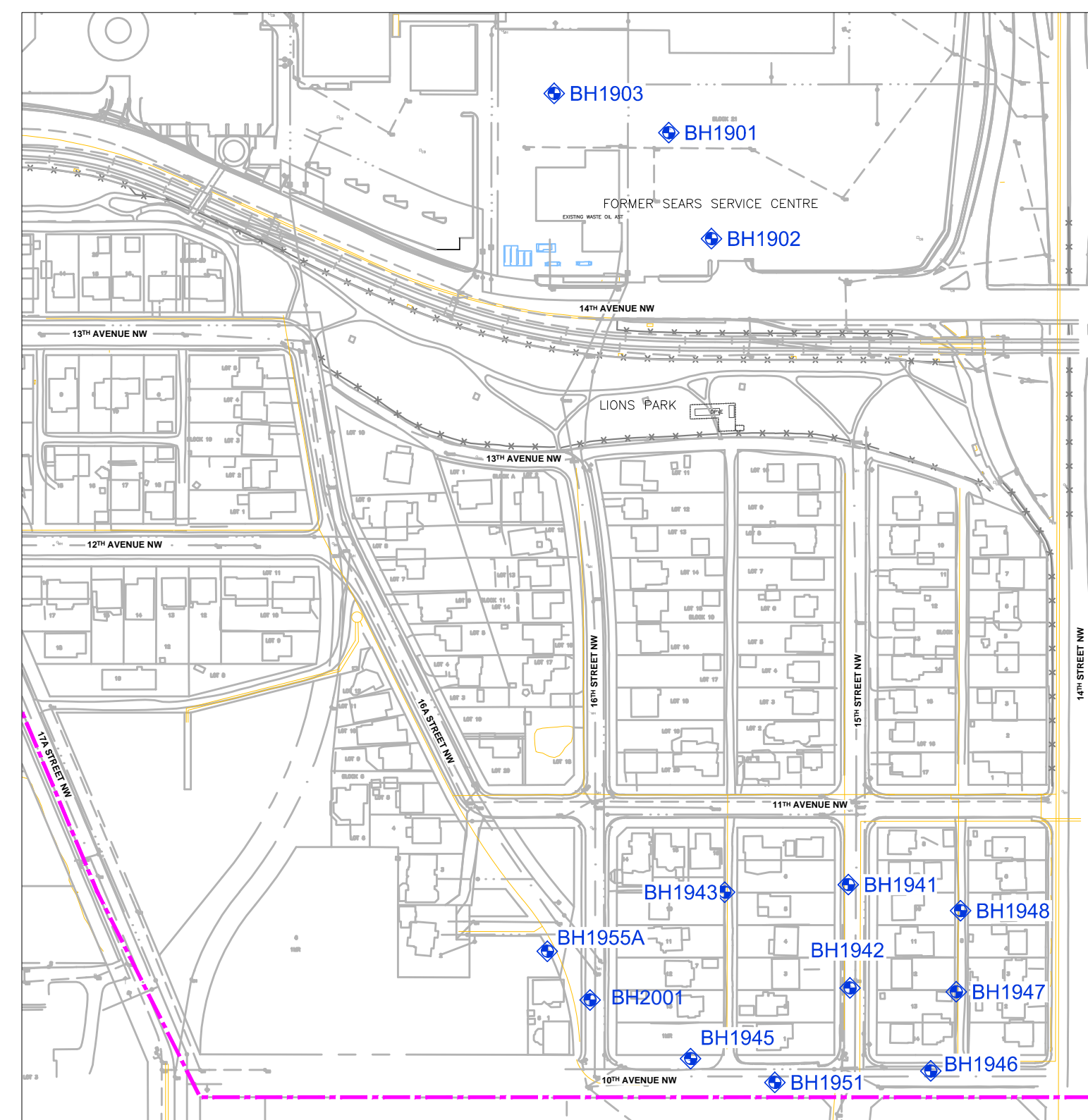
UNIT 2 - UPPER CLAYEY SILT



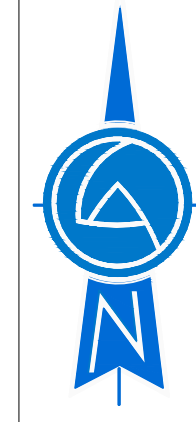
UNIT 3 - MIDDLE SANDY SILT



UNIT 4 - LOWER CLAYEY SILT



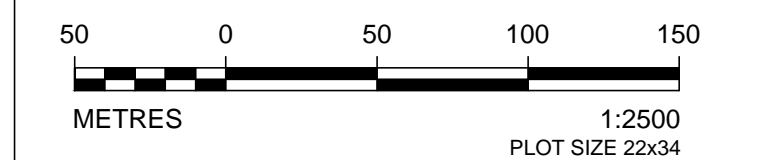
UNIT 5 - LOWER SILTY SAND AND GRAVEL



LEGEND

- SITE BOUNDARY: Pink dashed line
- EXTRACTION WELL: Blue square
- LRT TRACKS: Yellow line
- FENCE LINE: Dashed line
- LEGAL LINE: Solid line
- FORMER FACILITY/FEATURE: Blue outline
- BUILDING: Blue outline
- EXISTING GROUNDWATER MONITORING WELL: Blue diamond with 'BH' label
- CONCENTRATION EXCEEDS ALBERTA TIER 1 GUIDELINE VALUE - 0.005 mg/L: Pink shaded area
- DETECTABLE CONCENTRATION BUT BELOW ALBERTA TIER 1 GUIDELINE VALUE - 0.005 mg/L: Yellow shaded area
- UNIT CONTACT: Green dashed line

NOTES:
 1 DRAWING COMPILED FROM PLANIMETRIC FILES SUPPLIED BY THE CITY OF CALGARY (INCLUDING UG UTILITIES) & FROM SITE ASSESSMENT INFORMATION. ADDITIONAL REFERENCES FROM SEAROR ENVIRONMENTAL ENGINEERING INC., DRAWINGS 149-5A11.DWG, 149-5A6.DWG.



CLIENT
SEARS

PROJECT
 AMENDMENT LETTER
 Q1 2018 MONITORING AND SAMPLING PROGRAM
 HOUNSFIELD HEIGHTS - BRIAR HILL COMMUNITY
 CALGARY, ALBERTA

TITLE
 DISTRIBUTION OF NAPHTHALENE IN
 GROUNDWATER AS A PLUME MAP, APRIL 2018

DESIGNED	SCALE	DATE
RD	1:2500	2018-07-05
CHECKED	PROJECT NO.	FIG.
TK	CG2430.1 E30	12
	FILE NO.	
	CG2430.1-E28-08	